

CODEMAN 1 PT

Common Rail Injector & Pump Test & Code Bench



All Makes Test And Coding Bench For 4 Brands Injectors and CR Pumps



Current emissions standards and future guidelines do the testing of common rail injectors increasingly important in modern diesel engines. Precise adjustment, measurement and the coding will save the world.

The 1 Cylinder common rail injector test bench CODEMAN PT has advantages for the Workshop. Companies benefit equally from this the short assembly and testing times as described by the user-friendly operation in everyday life Work. The CODEMAN PT is suitable for workshops with medium-fast daily volume of injector tests



Approximately
2.000.000.000

**Diesel CR injectors and 500.000 pumps
are traveling in the world**

Product Details

User Friendly Operation Menu

Wide Range Injector
Fixtured Area

Ergonomic Design

Easy setup with 90° Fittings
and 3300 Bar Flexi Pipes

Easy Movement with Wheels

Pump Testing

Drawer for the Accesories

Efficient Test Oil Cooling System

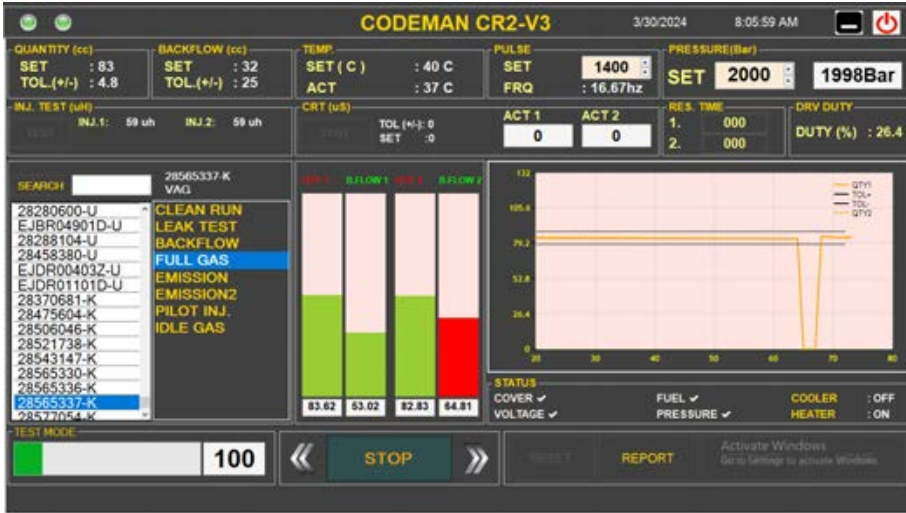


Scan the code to watch the video



Excellently Equipped for Testing & Coding of CR Injectors and Testing CR Pumps

- BOSCH PIEZO CR injector Testing and ISA coding
- BOSCH SOLENOID CR injector Testing and IMA coding
- DENSO Piezo and Selenoid CR injector Testing and QR coding
- SIEMENS VDO CONTINENTAL Piezo CR injector Testing and IIC coding
- DELPHI Cr injector Testing and C2i/C3i/C4i Coding



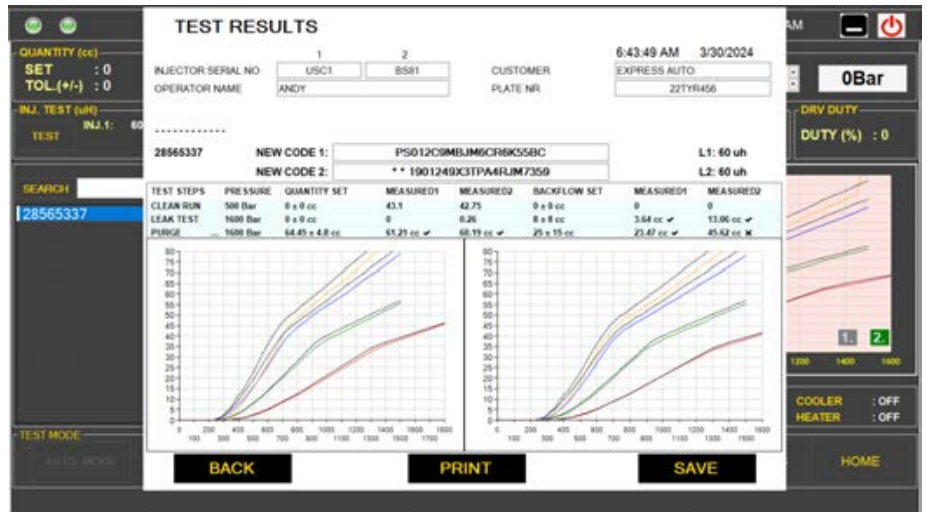
Test Screen



There are 7 groups and over 5000 different test values in database, so each group offers perfect coding and testing for injector. Software updates and test plans can be loaded with remote desktop free of charge.



In coding section there are ready targets for most of injectors and coding section can be used unlimited without any adding fee.



Delphi Coding

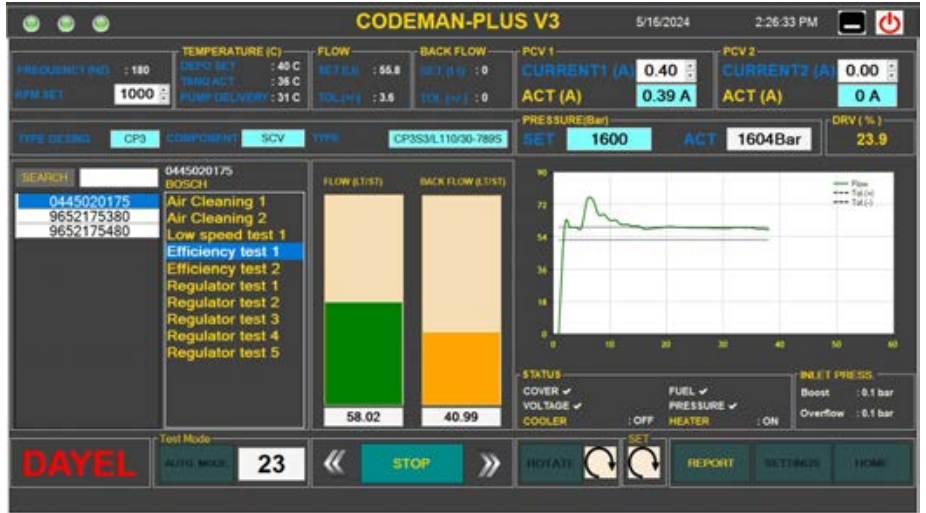
You Could Test These Pumps

- Bosch CP1-CP3-CP4 Pumps
- Delphi Pumps
- Denso HP3 Pumps
- Siemens Pumps





CODEMAN 1 PT stands out for its versatility in testing various diesel pump models including Bosch CP1, CP3, CP4, Delphi, Denso HP3, and Siemens CR pumps.



Pump Testing



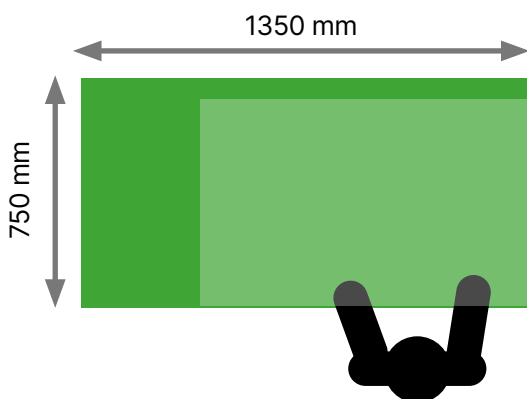
Test Results

It has reduced setup and test times as well as user friendly operation menu. Full automatic and semi-automatic testing provides certain and fast results.

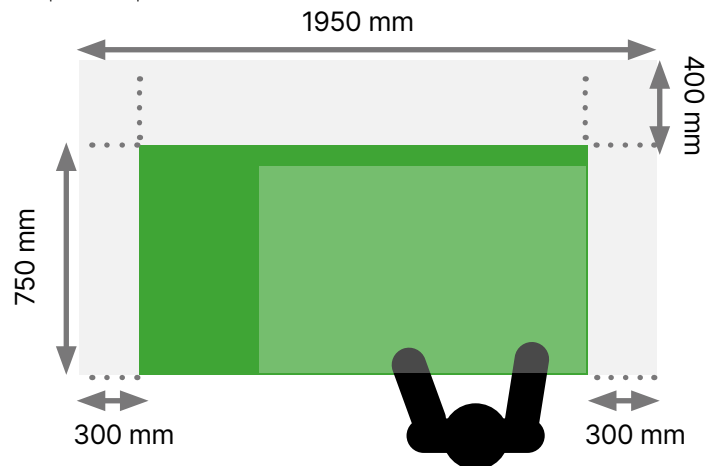


Sensitive flowmeters has capable to test injectors under 8 minutes in manual mode
Operation via 15,6" touch screen monitor

Machine Dimensions



Required Space



Technical Details & Accessories	
Supply voltage	AC 380 (3P+N+GND)
Motor Power	7.5 Hp
High pressure pump pressure	0-2200 Bar (Opt. 2500 Bar)
Flow Sensor Filter	20uM
Inj Flow Sensor Range	0.1 – 500 cc /min
Dimensions (L x H x W)	1350×1600×750 mm
Weight	400 Kg
Oil Tank Capacity/Type	20 lt (ISO 4113)
Power Output (duration)	6 Kw

Included Delivery Package



Optional Accessories



Test Adapters Type 1



Test Adapters Type 2



MB 4PIN Connection Set



Injector Dissamble Clamper



Siemens Land Rover Type Testing Bracket



CPN5 Type Pump Testing Tools, Flanges



CP2 Type Pump Testing Tools, Flange



CP3 MAN Type Pump Testing Tools, Flanges



Ultrasonic Cleaner



Coding Printer



Oil Supply System

About Us



Ikiteilli OSB Ataturk Bulvari Mehmet Cakici Is Merkezi
No.68/302 34490 Basaksehir - Istanbul - Turkey

Tel : +90 212 671 33 94
Gsm : +90 532 236 00 55
Web : www.dayeldiesel.com
Email : dayel@dayel.com.tr
Email : info@dayel.com.tr



Manufacture

Diesel Test Benches, CR Systems,
DPF Cleaning Machines & UNIT
Systems, GDI Test Systems,
Accessories



Service

We provide after sale service for all
our products



Spare Parts

Nozzles, valves, injectors and pumps ,
CR injector spare parts, tools



Academy

We have diesel training programs,
contact us to get more info about
Dayel Academy

